

# NOTICE TO MARINERS

## DOGGER BANK OFFSHORE WIND FARM

DATE OF ISSUE:	16/02/2022
NOTICE TO MARINERS NUMBER:	LF500013-MIP-DOG-NOT-0015

### Dogger Bank A & B, Nearshore Intervention Works

LOCATION DESCRIPTION		Bridlington Bay, approximately 1400m from shore in the Dogger Bank A&B export cable corridor
COORDINATES WGS 84	Works location	54°0.444'N 000°11.751'W
START DATE/TIME		21 <sup>st</sup> February 2022
ESTIMATED END DATE/TIME		31 <sup>st</sup> May 2022

### Description of Hazard/Operation

The dive support vessel **Isle of Jura** and the Crew Transfer Vessel **Celtic Mara** will transit from Whitby harbour on the 21<sup>st</sup> February to the work site, at Bridlington Bay.

On arrival to the worksite the **Isle of Jura** will deploy a five-point mooring spread, including anchors, ground tackle, riser chains and mooring cans. Each mooring can will be fitted with a yellow marker light, which will display a set flashing sequence. The **Isle of Jura** will remain on station/site during the night and be manned 24 hours throughout.

Dive operations will be carried out from the **Isle of Jura**. These operations may continue during the hours of darkness. A short safety message will be broadcast on VHF CH16 announcing start and end of dive operations. Flag 'Alpha' and the appropriate lights will be displayed during dive operations. Vessels are requested to maintain a 500m safe passing distance at all times.

The **MV Pulsar** will be carrying out MBES surveys of the seabed and along the pre-cut trenches throughout the dredging activities. The survey gear will be positioned on a side mounted pole and extended into the water. **MV Pulsar** will make several passes over the area at a reduced speed. **MV Pulsar** will transit from Bridlington Harbour to the work site throughout the project. Vessels are requested to keep well clear and pass at reduced speed during survey works.

The dredger barge **Abeko Server 2** will be carrying out spoil management, trenching and backfilling activities. The backfilling activities will commence once the submarine power cable has been installed. The **Abeko Server 2** will remain on station/site during the night and be manned 24 hours throughout. A tug vessel (name TBC) will remain with the **Abeko Server 2** to assist in barge movements/relocation on site and towing to Port when required.

The CTV **Celtic Mara** will be carrying out crew transfer activities from Bridlington Harbour to the **Isle of Jura** daily.

All vessels will display lights and day shapes appropriate to their work scope.

# NOTICE TO MARINERS

## Contact Details

<b>MARINE COORDINATION CONTACT</b>	John Bray <a href="mailto:John.bray@sse.com">John.bray@sse.com</a>
<b>FLO CONTACT</b>	Alex Winrow-Giffin - Brown & May Marine Ltd <a href="mailto:Alex@brownmay.com">Alex@brownmay.com</a> Tel: 01379 870144 Zoe Lawrence - Brown & May Marine Ltd <a href="mailto:zoe@brownmay.com">zoe@brownmay.com</a> Mob: 07923 138175
<b>CONTRACTOR CONTACT</b>	Ross Smith - NKT <a href="mailto:Ross.smith@nkt.com">Ross.smith@nkt.com</a> Mob: 07999 030808


## Supporting Information


### Vessels involved in the works:

Vessel Name – Isle of Jura	Vessel Contact Details	
	Call Sign	MFFY6
	MMSI	232021966
	IMO	9865697
	VHF Ch.	16 & 70
	Email	<a href="mailto:jura@seafastltd.co.uk">jura@seafastltd.co.uk</a>
	Vessel Details	
	Length	33.2m
	Breadth	14.5m
	Draft	2.6 – 4.9m
	Year Built	2019
Other Information		
RSV 3315 Offshore Service Vessel		

Vessel Name – Celtic Mara	Vessel Contact Details	
	Call Sign	2GLP3
	MMSI	235098447
	IMO	N/A
	VHF Channel	16 & 70
	Mobile Number	+44 7464 014 090
	Email	N/A
	Vessel Details	
	Length	11m
	Breadth	3.4m
	Draft	0.8m
Year Built	2013	
Other Information		
Humber/Quinquari RHIB- MCA Cat 3.		
Crew Transfer Vessel.		
Provide assistance for Diving Operations.		

# NOTICE TO MARINERS

Vessel Name – MV Pulsar	Vessel Contact Details	
	Call Sign	2FBX2
	MMSI	235089965
	IMO	N/A
	VHF Channel	16 & 70
	Mobile Number	N/A
	Email	N/A
	Vessel Details	
	Length	7.2m
	Breadth	2.7m
	Draft	0.3m
Year Built	2006	
Other Information		
Shallow drafted Cheetah Marine catamaran.		
MBES survey vessel.		

Vessel Name – Abeko Server 2	Vessel Contact Details	
	Call Sign	PEDD
	MMSI	244290000
	IMO	N/A
	VHF Channel	16 & 70
	Mobile Number	N/A
	Email	N/A
	Vessel Details	
	Length	48m
	Breadth	11m
	Draft	3.0m
Year Built	1997	
Other Information		
Dredger Barge		

# NOTICE TO MARINERS

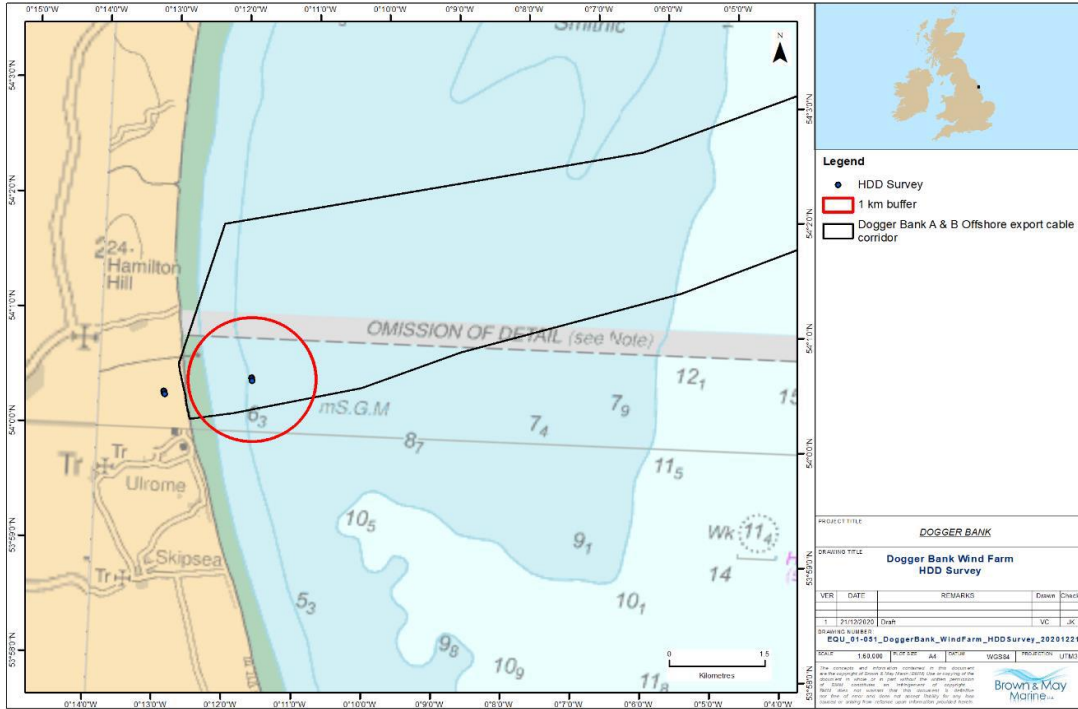


Fig 1 Location Chart

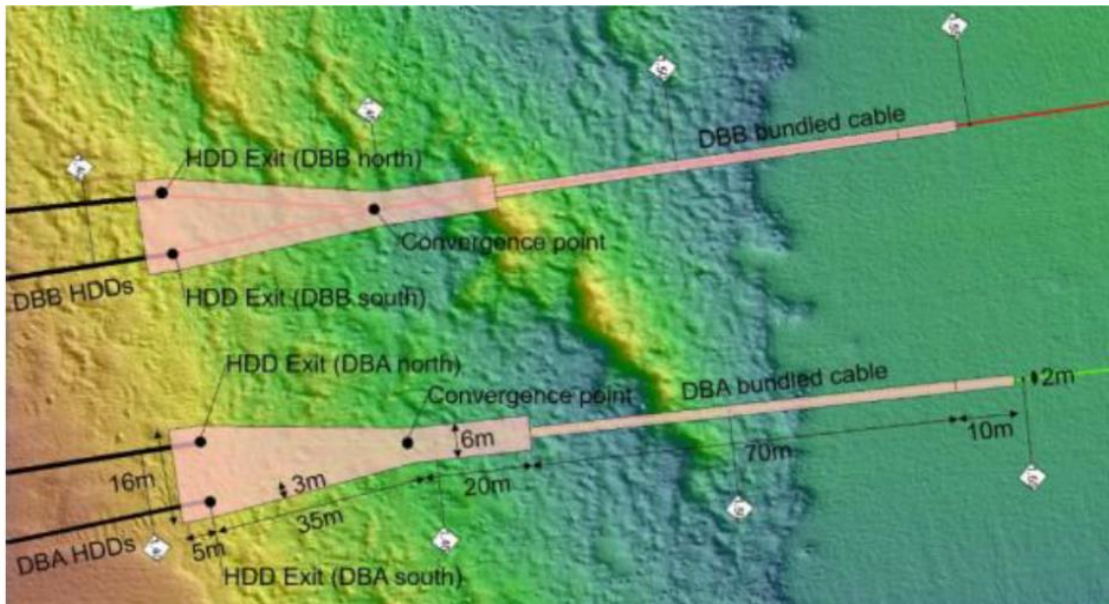


Fig 2 Diagram of the Pre-cut Trench Works

Table 1 Isle of Jura Anchor Positions

Anchor No.	WGS 84	
1	54° 00.503'N	000° 11.877'W
2	54° 00.518'N	000° 11.646'W
3	54° 00.397'N	000° 11.620'W
4	54° 00.375'N	000° 11.846'W
5	54° 00.430'N	000° 11.904'W