

NOTICE TO MARINERS

DOGGER BANK OFFSHORE WIND FARM

DATE OF ISSUE:	07/03/2022
NOTICE TO MARINER NUMBER	LF700013-ESI-DOG-NOT-0001

Dogger Bank C Export Cable Geophysical Survey

LOCATION DESCRIPTION		Dogger Bank C Export cable route and array area, 160 km from shore.
COORDINATES	DBA Export Cable Corridor	See table 1 below
WGS 84	Array cable area	See table 2 below
START DATE/TIME		15 March, 2022
END DATE/TIME		31 May, 2022

Description of Hazard/Operation

The survey vessel, **Northern Franklin**, will conduct a geophysical Pre-lay survey along the Dogger Bank C export cable corridor in the Southern North Sea, between 15th March 2022 and approximately 31st May 2022. Survey operations will be continuous, 24 hours a day.

The works will contain both geophysical and seismic surveys, carried out using towed equipment. The towed streamer(s) is up to 320 m behind the vessel. It is therefore requested that all vessels maintain a minimum 1800m separation distance from the survey vessel and pass at reduced speed.

A detailed survey will be carried out along several corridors within the survey area. The survey work will be hull mounted Multibeam sonar and sub-bottom profiler work, along with towed Side scan sonar and piggy backed magnetometer-up (tow max 320 m).


During operations the **Northern Franklin** will be restricted in its ability to manoeuvre as defined under COLREGs (International Regulations for Preventing Collisions at Sea 1972) and will display the appropriate day shapes and lights. The vessel will also transmit an Automatic Identification System (AIS) message.

Contact Details

MARINE COORDINATION CONTACT	John Bray John.bray@sse.com
FLO CONTACT	Alex Winrow-Giffin, Brown & May Marine Ltd Alex@brownmay.com Tel: 01379 870181 Mob: 07760 160039 Zoë Lawrence - Brown & May Marine Ltd zoe@brownmay.com Mob: 07923 138175
VESSEL CONTACT (IF APPLICABLE)	GSM: +46 31 31 00 301 Email: franklin@northern-survey.com

NOTICE TO MARINERS

Supporting Information

Vessel – Northern Franklin	Contact Details	
	Call Sign	OZIH2
	MMSI	219028268
	IMO	8301797
	Vessel Details	
	Length	55.6m
	Beam	12m
Draft	6m	
Vessel Contact	GSM: +46 31 31 00 301 Email: franklin@northern-survey.com	

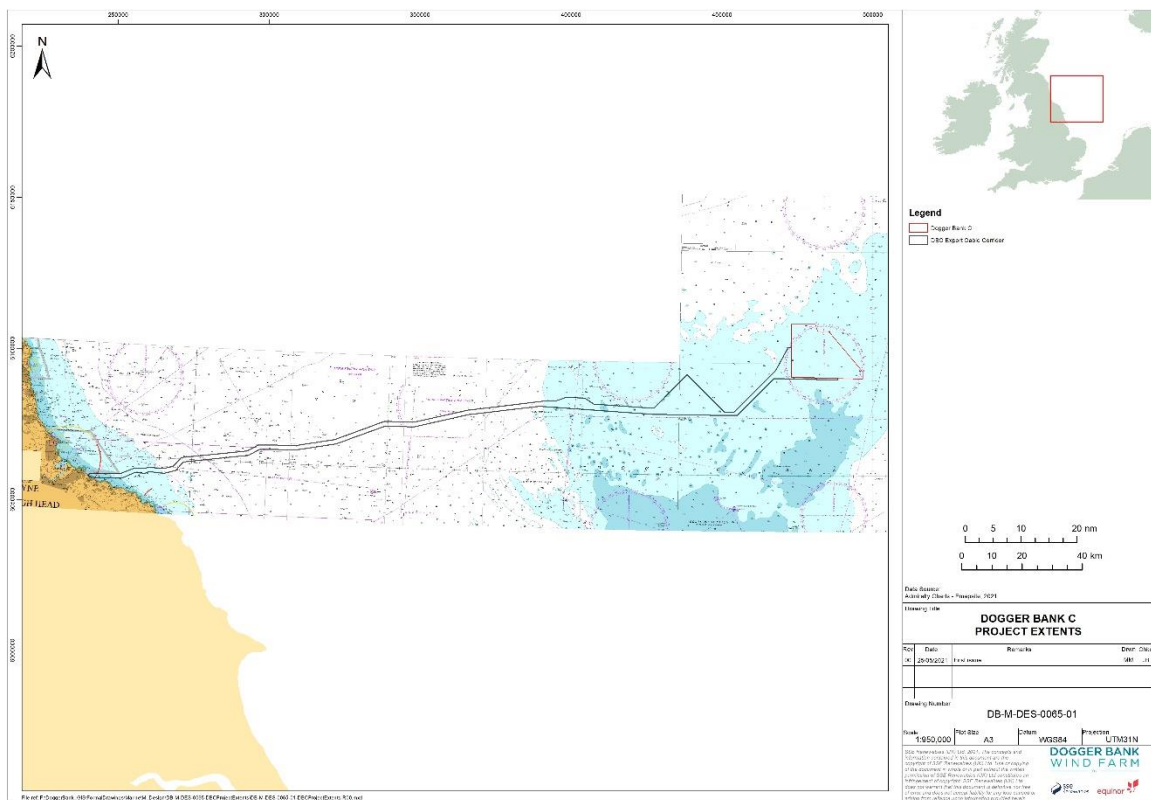


Fig 1 Location Chart DBC Export cable corridor route and array cable area

NOTICE TO MARINERS

Table 1 Survey area coordinates DBC Export Cable Corridor:

LOCATION DESCRIPTION		<u>Dogger Bank</u> C Export cable route-	
COORDINATES	The survey is a 500m corridor centred on this route	DBC 01	54° 36'.082N 000° 58'.318W
WGS 84		DBC 02	54° 36'.216N 000° 51'.618W
		DBC 03	54° 37'.342N 000° 47'.279W
		DBC 04	54° 37'.349N 000° 44'.394W
		DBC 05	54° 37'.590N 000° 42'.808W
		DBC 06	54° 37'.450N 000° 38'.397W
		DBC 07	54° 38'.049N 000° 34'.855W
		DBC 08	54° 39'.655N 000° 32'.535W
		DBC 09	54° 40'.091N 000° 27'.885W
		DBC 10	54° 41'.382N 000° 12'.932W
		DBC 11	54° 42'.532N 000° 09'.251W
		DBC 12	54° 42'.762N 000° 02'.283E
		DBC 13	54° 44'.056N 000° 14'.113E
		DBC 14	54° 47'.610N 000° 29'.257E
		DBC 15	54° 47'.653N 000° 38'.008E
		DBC 16	54° 50'.147N 000° 54'.929E
		DBC 17	54° 52'.065N 001° 17'.337E
		DBC 18	54° 50'.959N 001° 51'.656E
		DBC 19	54° 51'.089N 002° 00'.161E
		DBC 20	54° 50'.800N 002° 13'.143E
		DBC 21	54° 51'.100N 002° 17'.368E
		DBC 22	55° 01'.081N 002° 34'.708E

Table 2 Survey area coordinates DBC Array Cable Area:

Latitude (WGS84)	Longitude (WGS84)
55° 08.115' N	002° 32.765' E
55° 08.152' N	002° 45.781' E
54° 58.197' N	003° 00.163' E
54° 56.191' N	002° 32.900' E
54° 56.241' N	003° 00.163' E