

NOTICE TO MARINERS

DOGGER BANK OFFSHORE WIND FARM

DATE OF ISSUE:	31/04/2022
NOTICE TO MARINER NUMBER	LF500013-MIP-DOG-NOT-0017

Dogger Bank A Boundary Buoy Installation

LOCATION DESCRIPTION		Dogger Bank A Offshore Windfarm, Construction
COORDINATES WGS 84	DBA Export Cable Corridor	See Table 1 below
START DATE/TIME		13/05/2022
END DATE/TIME		20/05/2022

Description of Hazard/Operation

The Trinity House Buoy Installation Vessel, **Galatea**, will install the Dogger Bank A boundary Demarcation Buoys in the Southern North Sea.

The work will be performed in a single Campaign, starting on the 13th May 2022 and continuing until approximately 20th May 2022. The work will be continuous, 24 hours a day. Buoy characteristics, location coordinates and a chart of the buoys are provided below.

During operations the **Galatea** will be restricted in its ability to manoeuvre as defined under COLREGs (International Regulations for Preventing Collisions at Sea 1972) and will display the appropriate day shapes and lights. The vessel will also transmit an Automatic Identification System (AIS) message.

It is requested that all vessels maintain a minimum 1.0Nm separation distance from the buoy installation vessel and pass at reduced speed.


Contact Details

Marine Coordination Contact	Duty Marine Coordinator Tel: +44 (0) 7586 332078 gm_dbmcc@equinor.com
Fisheries Liaison Officer (FLO) CONTACT	Alex Winrow-Giffin, Brown & May Marine Ltd Alex@brownmay.com Tel: 01379 870181 Mob: 07760 160039 Zoë Lawrence - Brown & May Marine Ltd zoe@brownmay.com Mob: 07923 138175
Vessel Shore Contact	Mobile: +44 (0) Email:

NOTICE TO MARINERS

DOGGER BANK WIND FARM

Supporting Information

Vessel – BLV Galatea	Contact Details	
	Call Sign	MRDQ7
	MMSI	235054097
	IMO	9338591
	Vessel Details	
	Length	84m
Beam	16.7m	
Draft	4.2m	
Vessel Contact	V-sat: + Mobile: +4	

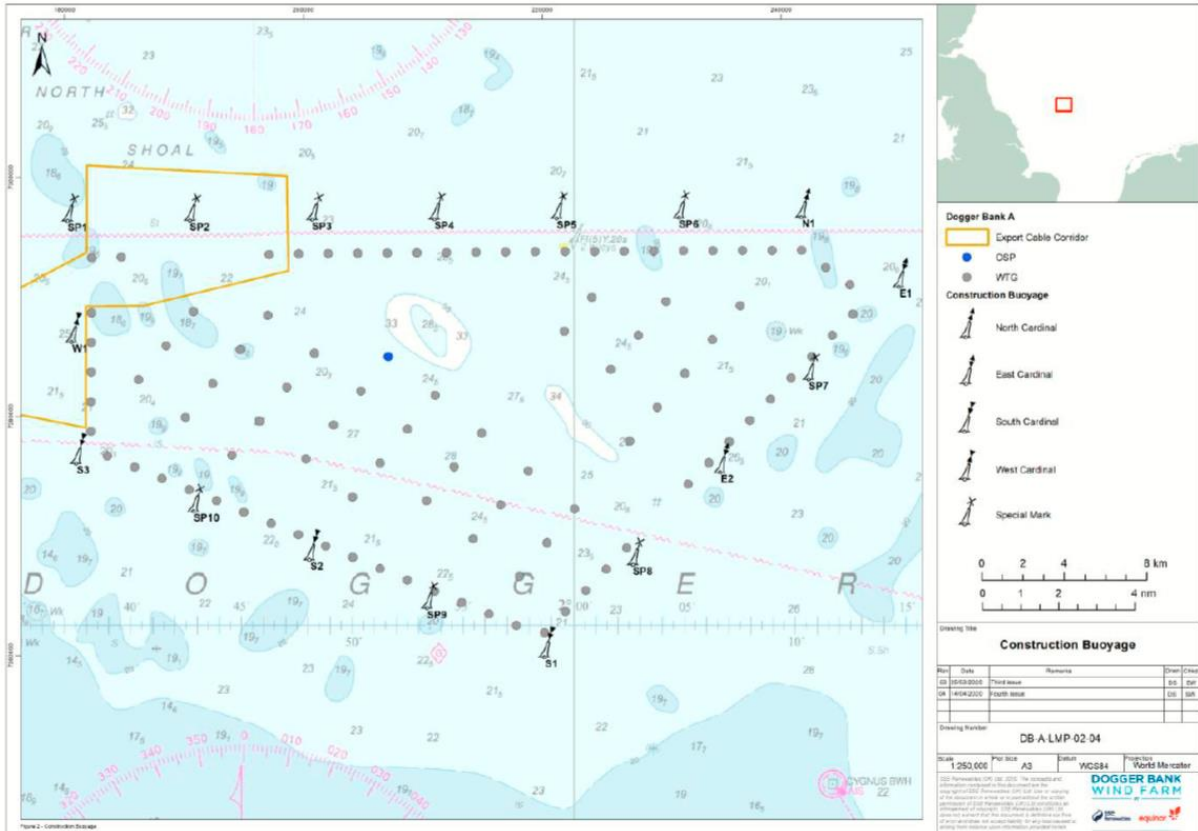


Figure 1: DBA Boundary Buoyage locations

NOTICE TO MARINERS

Buoy	ID	Location Datum: WGS 84		Top Mark and Light Specifications
		Latitude	Longitude	
North Cardinal	N1	54° 50.630' N	002° 10.286' E	North Cardinal top mark. VQkFI
East Cardinal	E1	54° 48.815' N	002° 14.689' E	East Cardinal top mark QkFI (3) 10s
East Cardinal	E2	54° 43.989' N	002° 06.623' E	East shaped top mark VQkFI (3) 5s light
South Cardinal	S1	54° 39.162' N	001° 58.695' E	South Cardinal top mark QkFI (6) + LFI 15s
South Cardinal	S2	54° 41.706' N	001° 48.096' E	South Cardinal top mark VQkFI (6) + LFI 10s
South Cardinal	S3	54° 44.216' N	001° 37.550' E	South Cardinal top mark QkFI (6) + LFI 15s
West Cardinal	W1	54° 47.380' N	001° 37.346' E	West Cardinal top mark QWkFI (9) 15s
Special Mark	SP1	54° 50.526' N	001° 37.141' E	Yellow 'X' shaped top mark FI (Y) 5s light
Special Mark	SP2	54° 50.543' N	001° 42.659' E	Yellow 'X' shaped top mark FI (Y) 5s light
Special Mark	SP3	54° 50.560' N	001° 48. 178' E	Yellow 'X' shaped top mark FI (Y) 5s light
Special Mark	SP4	54° 50.577' N	001° 53.697' E	Yellow 'X' shaped top mark FI (Y) 5s light
Special Mark	SP5	54° 50.595' N	001° 59.216' E	Yellow 'X' shaped top mark FI (Y) 5s light
Special Mark	SP6	54° 50.612' N	002° 04.734' E	Yellow 'X' shaped top mark FI (Y) 5s light
Special Mark	SP7	54° 46.402' N	002° 10.594' E	Yellow 'X' shaped top mark FI (Y) 5s light
Special Mark	SP8	54° 41.575' N	002° 02.657' E	Yellow 'X' shaped top mark FI (Y) 5s light
Special Mark	SP9	54° 40.442' N	001° 53.365' E	Yellow 'X' shaped top mark FI (Y) 5s light
Special Mark	SP10	54° 42.970' N	001° 42.825' E	Yellow 'X' shaped top mark FI (Y) 5s light

Table 1: Boundary Buoy locations and Characteristics

North Cardinal Mark	South Cardinal Mark	East Cardinal Mark	West Cardinal Mark	Special Mark
