

NOTICE TO MARINERS



DOGGER BANK OFFSHORE WIND FARM

DATE OF ISSUE:	19.07.2022
NOTICE TO MARINER NUMBER	LF500013-ESI-DOG-NOT-0006

Dogger Bank A Export Cable Lay Operations Rock Placement

LOCATION DESCRIPTION		Dogger Bank A Offshore Windfarm, Export Cable Corridor
COORDINATES WGS 84	DBA Export Cable Corridor	See Table 1 below
START DATE/TIME		27/07/22
END DATE/TIME		08/08/22

Description of Hazard/Operation

The rock placement vessel, **Flintstone**, will perform rock placement on the Dogger Bank A export cable route in the Southern North Sea. Rock will be placed as remedial work on the export cable as well as the Langed pipeline crossing (KP55 approx.), midline joint position (KP70 approx.) and the SEAL pipeline crossing (KP146 approx.). In/out surveys will be performed prior to and following rock placement at each position.

The work will be performed in a single campaign with 2 planned loads of rock, mobilising on the 27th July 2022. Work will be performed within the Dogger Bank Wind Farm area prior to work on the Export Cable (EC) route. Work within the EC route is expected to commence 30th July and continue until approximately 8th August 2022. The work will be continuous, 24 hours a day. It is expected that placement of each load will take approximately 4-5 days, followed by 2-3 days cycle time to reload with rock.

Coordinates of the rock placement working areas within the EC corridor are provided within Table 1 and Table 2.

Coordinates and chart of the full EC route are presented in Table 3 and Figure 1.

During rock placement operations, the construction working corridor will remain closed for any static fishing, anchoring or use of other equipment with seabed intervention. The Flintstone will be restricted in its ability to manoeuvre as defined under COLREGs (International Regulations for Preventing Collisions at Sea 1972) and will display the appropriate day shapes and lights. The vessel will also transmit an Automatic Identification System (AIS) message.

It is requested that all vessels maintain a minimum of 1.5Nm separation distance from the Flintstone and pass at reduced speed. Fishing gear or other equipment with seabed intervention should not be deployed when approaching the working corridor.

In the period between cable lay and protection by rock placement, or cable burial, the cable will be exposed on the seafloor. During this time the cable is sensitive to any external impact and constitutes a snagging risk for anchoring, fishing gear or other equipment with seabed intervention.

To protect the cable in the 500m working corridor, guard vessels will be deployed along the route (described in a separate NtM). The guard vessels will contact vessels approaching within 1.5Nm.

NOTICE TO MARINERS

Rock Placement Working Areas

Table 1: Rock Placement Working Area 1

AREA 1					
START WORKING EXTENTS	FROM KP	EASTING (UTM31N) [m]	NORTHING (UTM31N) [m]	LATITUDE (WGS84)	LONGITUDE (WGS84)
	17	304877.98	5994111.91	54°03.494'N	000°01.123'E
END WORKING EXTENTS	TO KP	EASTING (UTM31N) [m]	NORTHING (UTM31N) [m]	LATITUDE (WGS84)	LONGITUDE (WGS84)
	76	345741.22	6031894.16	54°24.682'N	000°37.378'E


Table 2: Rock Placement Working Area 2

AREA 2					
START WORKING EXTENTS	FROM KP	EASTING (UTM31N) [m]	NORTHING (UTM31N) [m]	LATITUDE (WGS84)	LONGITUDE (WGS84)
	129	383511.27	6067184.65	54°44.304'N	001°11.437'E
END WORKING EXTENTS	TO KP	EASTING (UTM31N) [m]	NORTHING (UTM31N) [m]	LATITUDE (WGS84)	LONGITUDE (WGS84)
	174	426673.46	6071276.02	54°46.999'N	001°51.589'E

Contact Details

Marine Coordination Contact	Duty Marine Coordinator gm_dbmcc@equinor.com
Fisheries Liaison Officer (FLO) CONTACT	Alex Winrow-Giffin, Brown & May Marine Ltd Alex@brownmay.com Tel: 01379 870181 Mob: 07760 160039 Zoë Lawrence - Brown & May Marine Ltd zoe@brownmay.com Mob: 07923 138175
Vessel Shore Contact	Jeremy Hartley (NKT DPA) Mobile: +44 7768 573 356 Email: Jeremy.Hartley@nkt.com

Supporting Information

Vessel – Flintstone	Contact Details	
	Call Sign	PBZD
	MMSI	245861000
	IMO	9528433
	Vessel Details	
	Length	154.6m
	Beam	32.2m
	Draft	7.7m
	Vessel Contact	VSAT Bridge: +49 42 151 7219 1963 GSM Captain: +31 6 5195 7354 Email: captain.flintstone@deme-group.com

NOTICE TO MARINERS



Table 3 Coordinates of the Installation Working area - Please note: The coordinates presented below represent a simplified centreline. The extent of the planned cable installation is +/-100m either side of the route, however a wider working area (+/-450m either side of the route) is expected to account for turning radius, crossings, approaches to the nearshore and the Offshore Platform location.

ID	Degrees Decimal Minutes	
	Latitude (WGS 84)	Longitude (WGS 84)
1 (Nearshore)	54°00.282'N	000°13.012'W
2	54°00.455'N	000°11.533'W
3	54°00.429'N	000°10.931'W
4	54°03.102'N	000°00.788'E
5	54°03.600'N	000°01.301'E
6	54°03.803'N	000°02.874'E
7	54°04.569'N	000°03.028'E
8	54°06.099'N	000°05.499'E
9	54°08.000'N	000°12.106'E
10	54°08.970'N	000°13.279'E
11	54°10.844'N	000°18.926'E
12	54°14.297'N	000°27.019'E
13	54°15.388'N	000°28.232'E
14	54°15.285'N	000°28.964'E
15	54°15.614'N	000°29.864'E
16	54°25.876'N	000°38.494'E
17	54°27.155'N	000°39.057'E
18	54°29.917'N	000°43.535'E
19	54°36.977'N	000°52.296'E
20	54°38.203'N	000°54.450'E
21	54°45.004'N	001°13.429'E
22	54°46.679'N	001°30.266'E
23	54°47.791'N	001°35.394'E
24	54°47.935'N	001°37.680'E
25	54°46.881'N	001°41.153'E
26	54°47.496'N	001°45.504'E
27	54°47.291'N	001°46.521'E
28	54°47.410'N	001°48.787'E
29 (Offshore)	54°46.998'N	001°51.603'E

NOTICE TO MARINERS

DOGGER BANK WIND FARM

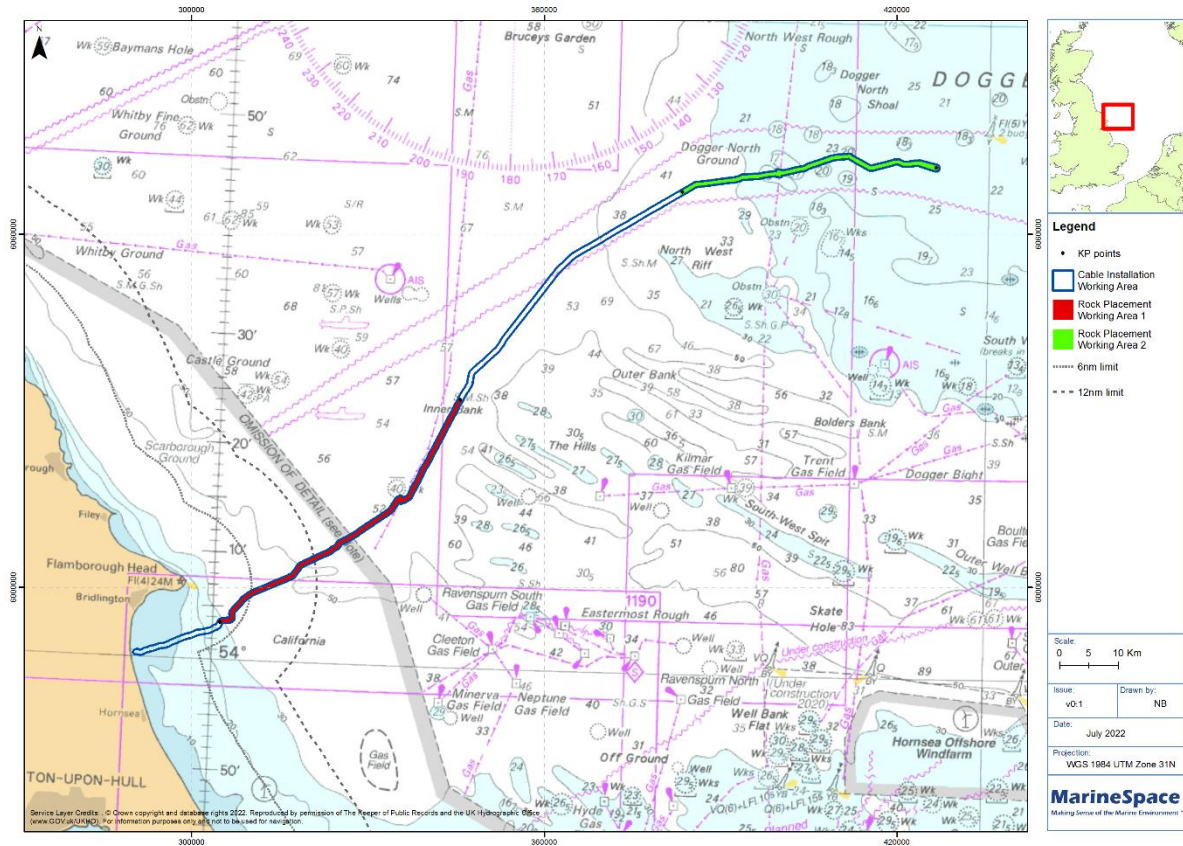


Figure 1: Cable Installation Working Area Overview and Rock Placement Locations