

NOTICE TO MARINERS



DOGGER BANK OFFSHORE WIND FARM

DATE OF ISSUE:	29/10/2022
NOTICE TO MARINER NUMBER	LF500013-MIP-DOG-NOT-0020rev01

Dogger Bank A Balance of Plant & Asset Preservation Campaign

LOCATION DESCRIPTION		Dogger Bank A Offshore Windfarm
COORDINATES WGS 84	DBA OWF	See Table 1 below
START DATE/TIME		06/11/2022
END DATE/TIME		05/01/2023

Description of Hazard/Operation

The Offshore Supply Vessel, **VOS Start**, will carry out Balance of Plant (BoP) and Asset Preservation operations within Dogger Bank A construction site.

The works will be performed in a single campaign, commencing on the 6th of November 2022 and continuing until approximately 5th January 2023. The works will be continuous, 24 hours a day. Charts of the DBA Array areas are provided below.

The operations will include visual inspections and remedial maintenance at installed WTG foundation locations.

During operations, the **VOS Start** will be restricted in its ability to manoeuvre as defined under COLREGs (International Regulations for Preventing Collisions at Sea 1972) and will display the appropriate day shapes and lights. The vessel will also transmit an Automatic Identification System (AIS) message.

It is requested that all vessels maintain a minimum of 500m separation distance from the Offshore Supply Vessel and pass at reduced speed. Fishing gear or other equipment with seabed intervention should not be deployed when approaching the working area.

Contact Details

Marine Coordination Contact	Duty Marine Coordinator Tel: +44 (0) 7586 332078 gm_dbmcc@equinor.com
Fisheries Liaison Officer (FLO) CONTACT	Alex Winrow-Giffin, Brown & May Marine Ltd Alex@brownmay.com Tel: 01379 870181 Mob: 07760 160039 Zoë Lawrence - Brown & May Marine Ltd zoe@brownmay.com Mob: 07923 138175
Vessel Shore Contact	Joyce Scholten QHSE Manager / DPA Vroon Offshore Services B.V. T +31223673853 M +31 6 15 05 66 16 joyce.scholten@nl.vroonoffshore.com

NOTICE TO MARINERS

Supporting Information


Vessel – VOS Start		Contact Details		
	C/S	PBIH		
	IMO/ MMSI	9730505 / 244890845		
	Vessel Details			
	Length	80.0m		
	Beam	18.4m		
Draft	6.0m			
Vessel Contact	bridge@vosstart.fleetvroom.com +31 6 20133170 Joyce Scholten			
Office contact	QHSE Manager / DPA T +31223673853 M +31 6 15 05 66 16 joyce.scholten@nl.vroonoffshore.com			

Table1: Coordinates for DBA Construction Area

Latitude (WGS 84)	Longitude (WGS 84)
54° 50.526'N	001° 37.141'E
54° 50.630'N	002° 10.286'E
54° 48.815'N	002° 14.689'E
54° 39.162'N	001° 58.695'E
54° 44.216'N	001° 37.550'E

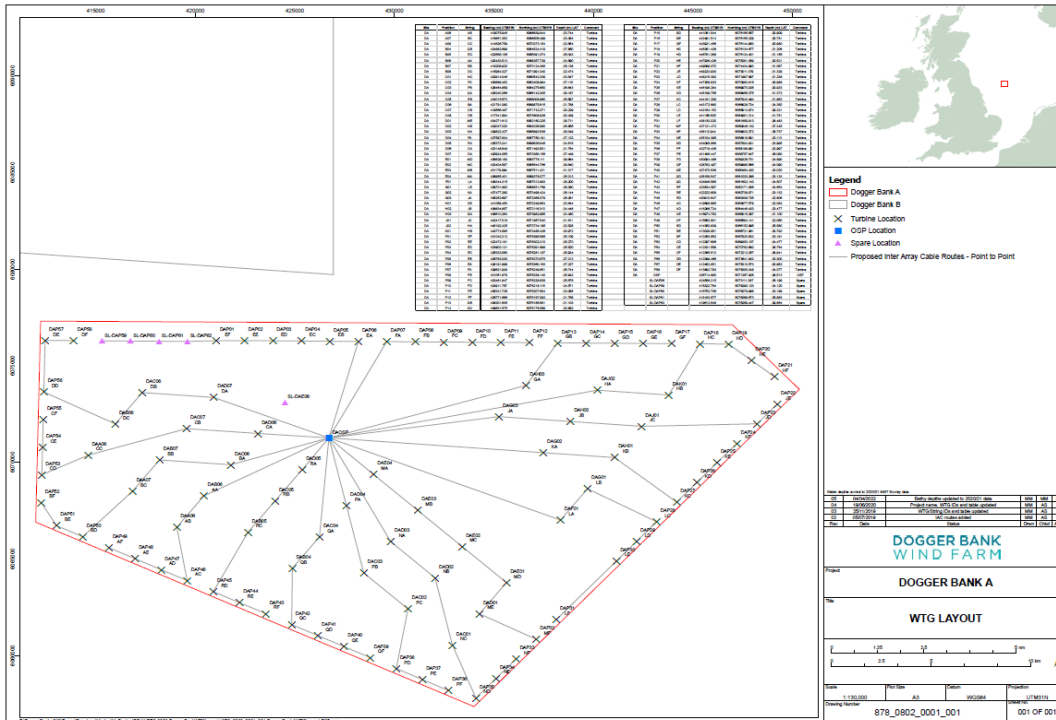


Figure 1: Dogger Bank A OWF WTG Foundation locations and IA Cable Layout