

NOTICE TO MARINERS



DOGGER BANK OFFSHORE WIND FARM

DATE OF ISSUE:	13/04/2024
NOTICE TO MARINER NUMBER	LF600013-ESI-DOG-NOT-0009

Dogger Bank B Offshore Sub Station Platform (OSP) Export Cable Pull-in

LOCATION DESCRIPTION	Dogger Bank B Offshore Windfarm, Export Cable Corridor and Offshore Platform Station	
COORDINATES	DBB Export Cable Corridor & OSP Position	See Table 1 below
START DATE/TIME	18/04/2024	
END DATE/TIME	30/05/2024	

Description of Hazard/Operation

Between approximately the 18th of April and 30th of May, when there is a suitable weather window, the previously wet stored cable ends near the Dogger Bank B Offshore Platform Station (OSP) will be recovered, re-laid and then pulled into the OSP by NKT Victoria.

During operations the NKT Victoria will be restricted in its ability to manoeuvre as defined under COLREGs (International Regulations for Preventing Collisions at Sea 1972) and will display the appropriate day shapes and lights. The vessel will also transmit an Automatic Identification System (AIS) message.

It is requested that all vessels maintain a minimum of 1.5Nm separation distance from the Cable laying vessel and pass at reduced speed.

An Offshore Fisheries Liaison Officer will be onboard NKT Victoria to provide support and coordination to fishing vessels, please see contact details below.

In the period between cable lay operation until the cable has been permanently protected by means of burial or rock placement, the cable will be locally exposed on the seafloor and the construction working corridor will remain closed for any static fishing, anchoring or use of other equipment with seabed intervention. During this time the cable is sensitive to any external impact and constitutes a snagging risk for anchoring, fishing gear or other equipment with seabed intervention.

NOTICE TO MARINERS

Contact Details

Marine Coordination Contact	Duty Marine Coordinator Gm_dbmcc@equinor.com Tel: +44 (0) 7586 332078
Fisheries Liaison Officer (FLO) CONTACT	Alex Winrow-Giffin, Brown & May Marine Ltd Alex@brownmay.com Tel: 01379 870181 Mob: 07760 160039 Zoë Lawrence - Brown & May Marine Ltd zoe@brownmay.com Mob: 07923 138175
Offshore Fisheries Liaison Officer (OFLO)	Chris Williams Mobile: +44 7707 770571 Email: willc2814@gmail.com
Vessel Shore Contact	Dave Holroyde Mobile: +44 787 627 2527 Email: dholroyde@caydaleconsulting.co.uk

Supporting Information


Vessel – NKT Victoria	Contact Details	
	Call Sign	LAWV7
	MMSI	257016000
	IMO	9791016
	Vessel Details	
	Length	140M
	Breadth (moulded)	29.6M
	Draught loaded (dredging)	Summer draft 8,0M
	Vessel Contact	V-sat: +47 22 40 81 10 Mobile: +47 46 18 51 45

Table1 Coordinates of the DBB Cable Pull-In Working area - Please note: The coordinate presented below represents a simplified point of the end of the DBB export cable. The extent of the planned cable pull-in is +2000m circumference.

All locations referenced to WGS 84

ID	Degrees Decimal Minutes	
	Latitude	Longitude
DBB Cable Pull-In Working area	54° 58.479'N	001° 38.464'E
DBB OSP Position	54° 59.077'N	001° 39.229'E

NOTICE TO MARINERS

DOGGER BANK WIND FARM

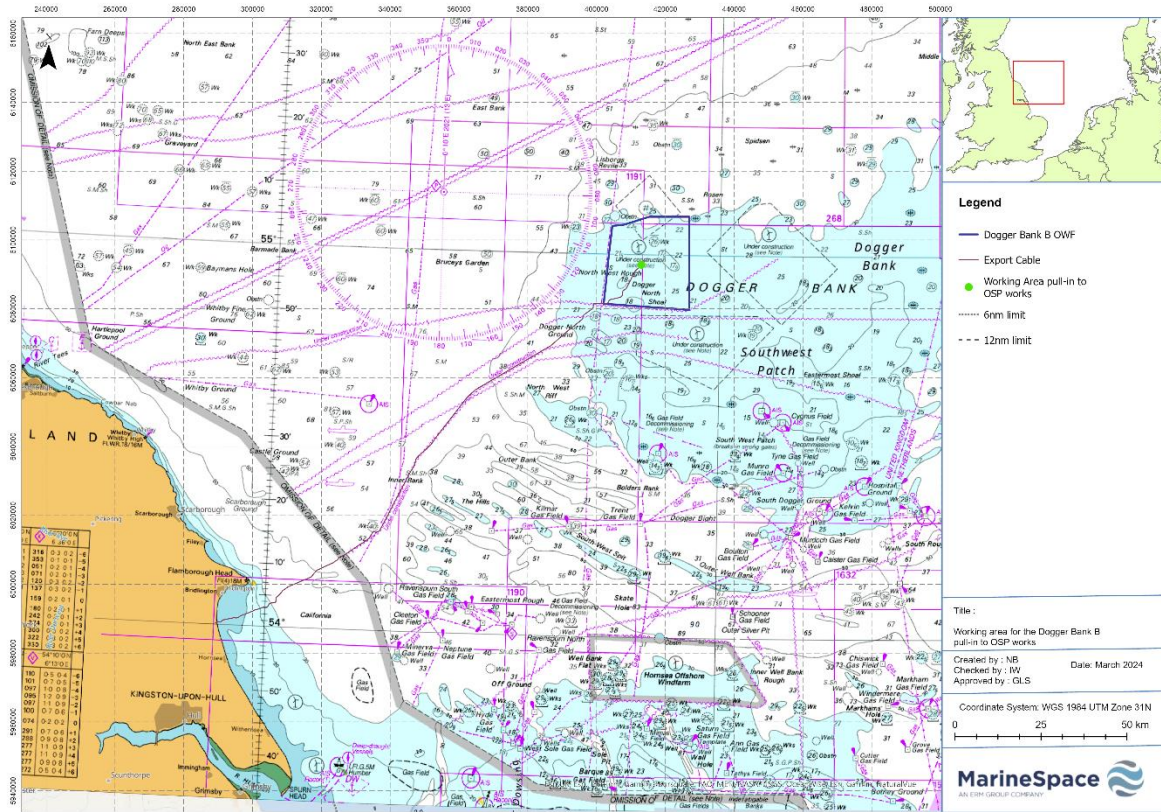


Figure 1: Dogger Bank B Cable Pull-In Working Area Overview