

# NOTICE TO MARINERS

## DOGGER BANK OFFSHORE WIND FARM

DATE OF ISSUE:	24/04/2024
NOTICE TO MARINER NUMBER	LF700013-MIP-DOG-NOT-0011

### Dogger Bank C Boundary Buoy Installation

LOCATION DESCRIPTION		Dogger Bank C Offshore Windfarm Construction Area
COORDINATES WGS 84	DBC OWF Location	See Table 1 below
Date of Installation		02nd May 2024 to 11 <sup>th</sup> May 2024

### Description of Installation

The Trinity House Buoy Installation Vessel, **Galatea**, will be installing the Dogger Bank C boundary demarcation buoys in the Southern North Sea between the 02<sup>nd</sup> and the 11<sup>th</sup> of May 2024.

The 17 construction boundary demarcation buoys will remain in location until the windfarm construction activities have been completed and handed over to the Operations and Maintenance teams.

Once the permanent Aids to Navigation (AtoN) have been installed on the WTGs, Trinity House will approve the permanent AtoN and the boundary buoys will be removed.

If anyone finds a buoy that is off station or encounters a buoy location where it is not functioning or is missing, they should report this to the Dogger Bank Duty Marine Coordinator as soon as possible.

### Contact Details

Marine Coordination Contact	Duty Marine Coordinator Tel: +44 (0) 7586 332078 <a href="mailto:gm_dbmcc@equinor.com">gm_dbmcc@equinor.com</a>
Fisheries Liaison Officer (FLO) CONTACT	Alex Winrow-Giffin, Brown & May Marine Ltd <a href="mailto:Alex@brownmay.com">Alex@brownmay.com</a> Tel: 01379 870181 Mob: 07760 160039 Zoë Lawrence - Brown & May Marine Ltd <a href="mailto:zoe@brownmay.com">zoe@brownmay.com</a> Mob: 07923 138175

# NOTICE TO MARINERS

## Supporting Information

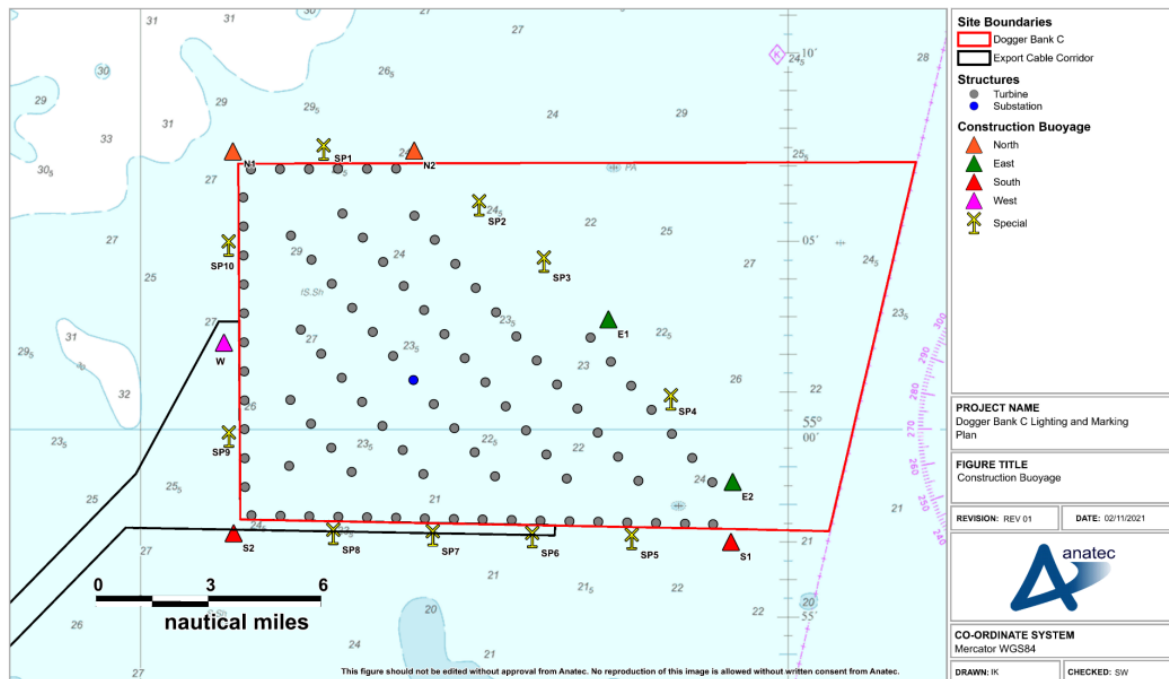


Figure 1: DBC Boundary Buoyage locations

Table 1: DBC Planned locations for construction boundary buoys

Buoy	ID	Location Datum: WGS 84		Top Mark and Light Specifications
		Latitude	Longitude	
North Cardinal	N1	55° 07.418' N	002° 34.283' E	<ul style="list-style-type: none"> <li>Pillar shaped with a north cardinal shaped topmark</li> <li>Exhibiting a Q light character</li> </ul>
North Cardinal	N2	55° 07.438' N	002° 42.677' E	<ul style="list-style-type: none"> <li>Pillar shaped with a north cardinal shaped topmark</li> <li>Exhibiting a Very (V) Quick (Q) light character</li> </ul>
East Cardinal	E1	55° 02.953' N	002° 51.690' E	<ul style="list-style-type: none"> <li>Pillar shaped with an east shaped topmark</li> <li>Exhibiting a Q (3) 10s light character</li> </ul>
East Cardinal	E2	54° 58.621' N	002° 57.446' E	<ul style="list-style-type: none"> <li>Pillar shaped with an east cardinal shaped topmark</li> <li>Exhibiting a V Q (3) 5s light character</li> </ul>
South Cardinal	S1	54° 57.020' N	002° 57.366' E	<ul style="list-style-type: none"> <li>Pillar shaped with a south cardinal shaped topmark</li> <li>Exhibiting a V Q (6) + L Fl 10s light character</li> </ul>
South Cardinal	S2	54° 57.251' N	002° 34.311' E	<ul style="list-style-type: none"> <li>Pillar shaped with a south cardinal shaped topmark</li> <li>Exhibiting a Q (6) Long (L) Fl 15s light character</li> </ul>
West Cardinal	W1	55° 02.331' N	002° 33.863' E	<ul style="list-style-type: none"> <li>Pillar shaped with a west cardinal shaped topmark</li> <li>Exhibiting a Q (9) 15s light character</li> </ul>
Special Mark	SP1	55° 07.426' N	002° 38.478' E	<ul style="list-style-type: none"> <li>Pillar shaped with a yellow 'x' shaped topmark</li> <li>Exhibiting a Fl. Y. 5 s light character</li> </ul>
Special Mark	SP2	55° 05.943' N	002° 45.683' E	<ul style="list-style-type: none"> <li>Pillar shaped with a yellow 'x' shaped topmark</li> <li>Exhibiting a Fl. Y. 5 s light character</li> </ul>
Special Mark	SP3	55° 04.448' N	002° 48.688' E	<ul style="list-style-type: none"> <li>Pillar shaped with a yellow 'x' shaped topmark</li> <li>Exhibiting a Fl. Y. 5 s light character</li> </ul>
Special Mark	SP4	55° 00.787' N	002° 54.570' E	<ul style="list-style-type: none"> <li>Pillar shaped with a yellow 'x' shaped topmark</li> <li>Exhibiting a Fl. Y. 5 s light character</li> </ul>
Special Mark	SP5	54° 57.066' N	002° 52.755' E	<ul style="list-style-type: none"> <li>Pillar shaped with a yellow 'x' shaped topmark</li> <li>Exhibiting a Fl. Y. 5 s light character</li> </ul>
Special Mark	SP6	54° 57.112' N	002° 48.144' E	<ul style="list-style-type: none"> <li>Pillar shaped with a yellow 'x' shaped topmark</li> <li>Exhibiting a Fl. Y. 5 s light character</li> </ul>

# NOTICE TO MARINERS

Buoy	ID	Location Datum: WGS 84		Top Mark and Light Specifications
		Latitude	Longitude	
Special Mark	SP7	54° 57.158'N	002° 43.533'E	<ul style="list-style-type: none"> <li>• Pillar shaped with a yellow 'x' shaped topmark</li> <li>• Exhibiting a Fl. Y. 5 s light character</li> </ul>
Special Mark	SP8	54° 57.204'N	002° 38.922'E	<ul style="list-style-type: none"> <li>• Pillar shaped with a yellow 'x' shaped topmark</li> <li>• Exhibiting a Fl. Y. 5 s light character</li> </ul>
Special Mark	SP9	54° 59.791'N	002° 34.087'E	<ul style="list-style-type: none"> <li>• Pillar shaped with a yellow 'x' shaped topmark</li> <li>• Exhibiting a Fl. Y. 5 s light character</li> </ul>
Special Mark	SP10	55° 04.878'N	002° 34.074'E	<ul style="list-style-type: none"> <li>• Pillar shaped with a yellow 'x' shaped topmark</li> <li>• Exhibiting a Fl. Y. 5 s light character</li> </ul>

Figure 2: Boundary Buoy Characteristics

