

NOTICE TO MARINERS



DOGGER BANK OFFSHORE WIND FARM

DATE OF ISSUE:	29/09/2024
NOTICE TO MARINER NUMBER	LF600013-MIP-DOG-NOT-0015

Dogger Bank B IAC Cable Installation

LOCATION DESCRIPTION		Dogger Bank B Offshore Windfarm
COORDINATES WGS 84	DBB OWF	See Table 1 below
START DATE/TIME		05/10/2024
END DATE/TIME		31/01/2025

Description of Hazard/Operation

The Cable Lay Vessel (CLV) **VIKING NEPTUN** will perform the inter array cable installation works with the commencement around 5th of October 2024. The works will continue over the winter. The vessel will further be assisted by the Walk to Work Vessel **SUDRI ENABLER** for the deployment of cable pull in teams. Shortly after the start of the cable installation, the Trenching Support vessel (TSV) **C-INSTALLER** will be mobilised to site for the burial of the installed cables. All works will be continuous, 24 hours a day. Charts of the DBB array area are provided below.

The cable lay vessel will deploy the inter array cable onto the seabed through her dedicated deck spread. The cable will remain exposed on the seabed till trenching works by **C-INSTALLER** are performed.

During operations, the **VIKING NEPTUN**, **C-INSTALLER** and **SUDRI ENABLER** will be restricted in their ability to manoeuvre as defined under COLREGs (International Regulations for Preventing Collisions at Sea 1972) and will display the appropriate day shapes and lights. The vessel will also transmit an Automatic Identification System (AIS) message.

It is requested that all vessels maintain a minimum of 1.5Nm separation distance from the vessels and pass at reduced speed. Fishing gear or other equipment with seabed intervention should not be deployed when approaching the working corridor.


Contact Details


Marine Coordination Contact	Duty Marine Coordinator Tel: +44 (0) 7586 332078 gm_dbmcc@equinor.com
Fisheries Liaison Officer (FLO) CONTACT	Alex Winrow-Giffin, Brown & May Marine Ltd Alex@brownmay.com Tel: 01379 870181 Mob: 07760 160039 Zoë Lawrence - Brown & May Marine Ltd zoe@brownmay.com Mob: 07923 138175
Vessel Shore Contact	Bart van Dun (DEME HSE Engineer) Mobile: +31 6 38 68 59 48 Email: Van.Dun.Bart@deme-group.com

NOTICE TO MARINERS

DOGGER BANK WIND FARM

Supporting Information

Vessel – VIKING NEPTUN		Contact Details		
	Call Sign	LAYH7		
	MMSI / IMO	258789000 / 9664902		
	Vessel Details			
	Length / Beam	145.6M / 31M		
	Draft	Operating 9 M		
	Vessel Contact	V-sat: +47 23673800 Email bridge: Bridge.VikingNeptun@deme-group.com		

Vessel – C-INSTALLER		Contact Details		
	Call Sign	OUPP2		
	MMSI / IMO	219031822 / 9165554		
	Vessel Details			
	Length / Beam	93m / 22m		
	Draft	6.5m		
	Vessel Contact	M: +45 93 63 57 07 Email: c-installer@jdcon.dk		


Vessel – SUDRI ENABLER		Contact Details		
	Call Sign	LAQP8		
	MMSI / IMO	257669000 / 9964924		
	Vessel Details			
	Length / Beam	88m / 20m		
	Draft	7m		
	Vessel Contact	Phone: +47 23029622 E-mail: master.sudri@eddawind.com		

Table1: Coordinates for DBB Construction area

COORDINATES WGS 84	DBB IAC array area	Latitude	Longitude
		54° 52.257'N	01°28.433'E
		54° 58.080'N	01°29.326'E
		54° 58.319'N	01°29.301'E
		55° 04.470'N	01°30.329'E
		55° 04.687'N	01°33.472'E
		55° 06.018'N	01°40.388'E
		55° 06.129'N	01°51.298'E
54° 51.554'N	01°51.712'E		
54° 52.257'N	01°28.433'E		

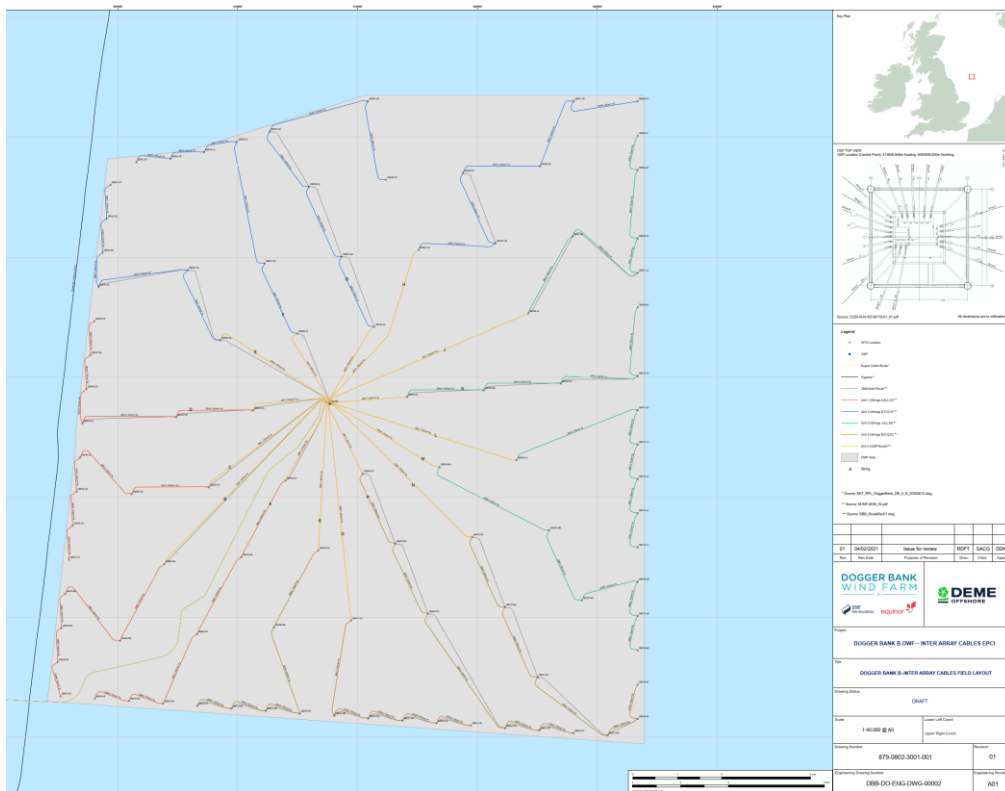


Figure 1: Fig 1 Dogger Bank B OWF IA Cable Layout